

Members of the JANU

●Regular Members (86 national universities)

●Special Members (4 organizations)

National Institutes for the Humanities,
National Institutes of Natural Sciences,
High Energy Accelerator Research Organization,
Research Organization of Information and Systems

Nation of Knowledge

Tokyo Branch

(12 universities)

The University of Tokyo,
Tokyo Medical and Dental University,
Tokyo University of Foreign Studies,
Tokyo Gakugei University,
Tokyo University of Agriculture and Technology,
Tokyo University of the Arts,
Tokyo Institute of Technology,
Tokyo University of Marine Science and Technology,
Ochanomizu University,
The University of Electro-Communications,
Hitotsubashi University,
National Graduate Institute for Policy Studies

Kanto-Koshin'etsu Branch

(14 universities)

Ibaraki University, University of Tsukuba,
Tsukuba University of Technology, Utsunomiya University,
Gunma University, Saitama University, Chiba University,
Yokohama National University,
The Graduate University for Advanced Studies,
Niigata University, Nagaoka University of Technology,
Joetsu University of Education,
University of Yamanashi, Shinshu University

Tokai-Hokuriku Branch

(12 universities)

University of Toyama, Kanazawa University,
Japan Advanced Institute of Science and Technology,
University of Fukui, Gifu University,
Shizuoka University,
Hamamatsu University School of Medicine,
Nagoya University,
Aichi University of Education,
Nagoya Institute of Technology,
Toyohashi University of Technology,
Mie University

Chugoku-Shikoku Branch

(10 universities)

Tottori University, Shimane University,
Okayama University, Hiroshima University, Yamaguchi University,
Tokushima University, Naruto University of Education,
Kagawa University, Ehime University,
Kochi University

Kyushu Branch

(11 universities)

Fukuoka University of Education, Kyushu University,
Kyushu Institute of Technology,
Saga University, Nagasaki University,
Kumamoto University, Oita University,
University of Miyazaki, Kagoshima University,
National Institute of Fitness and Sports in Kanoya,
University of the Ryukyus

Hokkaido Branch

(7 universities)

Hokkaido University,
Hokkaido University of Education,
Muroran Institute of Technology,
Otaru University of Commerce,
Obihiro University of Agriculture & Veterinary Medicine,
Asahikawa Medical University,
Kitami Institute of Technology

Tohoku Branch

(7 universities)

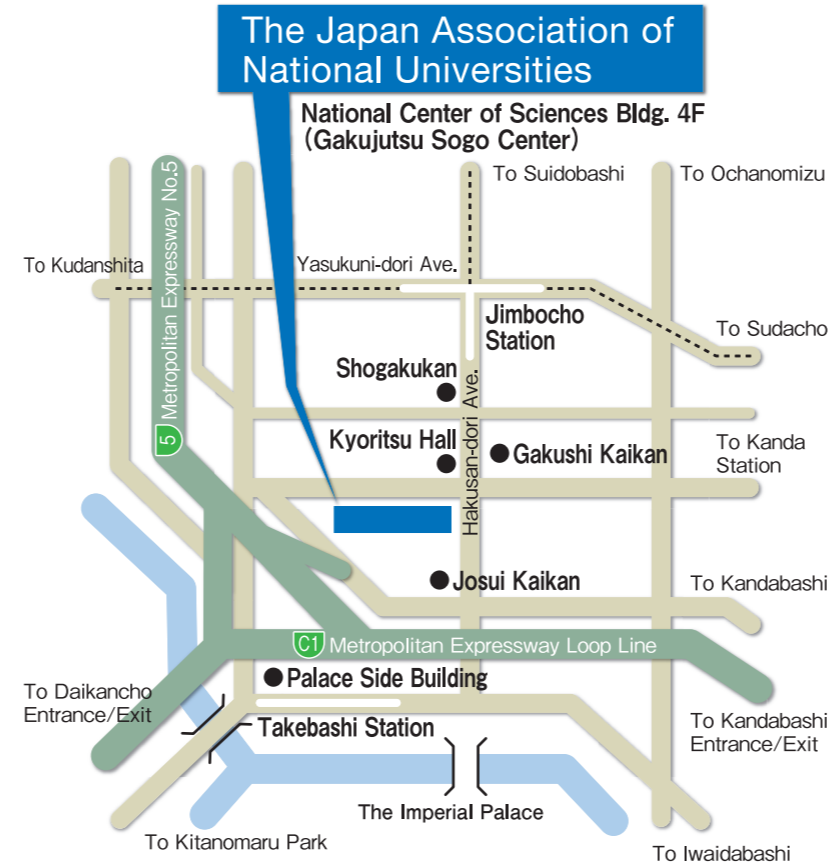
Hirosaki University,
Iwate University,
Tohoku University,
Miyagi University of Education,
Akita University,
Yamagata University,
Fukushima University

Kinki Branch

(13 universities)

Shiga University,
Shiga University of Medical Science,
Kyoto University,
Kyoto University of Education,
Kyoto Institute of Technology,
Osaka University,
Osaka Kyoiku University,
Hyogo University of Teacher Education,
Kobe University,
Nara University of Education,
Nara Women's University,
Nara Institute of Science and Technology,
Wakayama University

Access



Directions

By subway

3-minutes walk from Jimbocho Station, Exit A8
Take Hanzomon Line (Tokyo Metro), Mita Line (Toei),
or Shinjuku Line (Toei)
4-minutes walk from Takebashi Station, Exit 1B
Take Tozai Line (Tokyo Metro)

By car

Take Metropolitan Expressway and get off at Daikancho
Exit, Kandabashi Exit or Hitotsubashi Exit.



The Japan Association of
National Universities

<http://www.janu.jp>

National Center of Sciences Bldg. 4F
2-1-2 Hitotsubashi, Chiyoda-ku, Tokyo 101-0003, Japan
Tel:+81-3-4212-3506 Fax:+81-3-4212-3509 E-mail:info@janu.jp

The Japan Association of
National Universities

2017



The Japan Association of
National Universities

Message from the President

Upon reaching the third mid-term goal period since the reorganization of national universities as corporations, national universities are required to make a great leap forward based on the reforms that have been implemented so far. There are 86 eighty-six national universities in Japan, widely varying in size and area of focus. Most of the national universities were established based on the principle that one national university should be established in each prefecture to attain educational equality under the National School Establishment Act issued in 1949. All national universities have graduate schools, in which almost 70% of the graduate school students across the country are engaged in research. Thus, national universities play a central role in research activities in Japan. National university hospitals have also made a core contribution to advanced medicine and community medicine. Questions are currently being raised about how national universities will respond to the needs of the times, taking advantage of their diversity and their positions at the vanguard of academia.



JANU President
Juichi Yamagiwa
(President, Kyoto University)

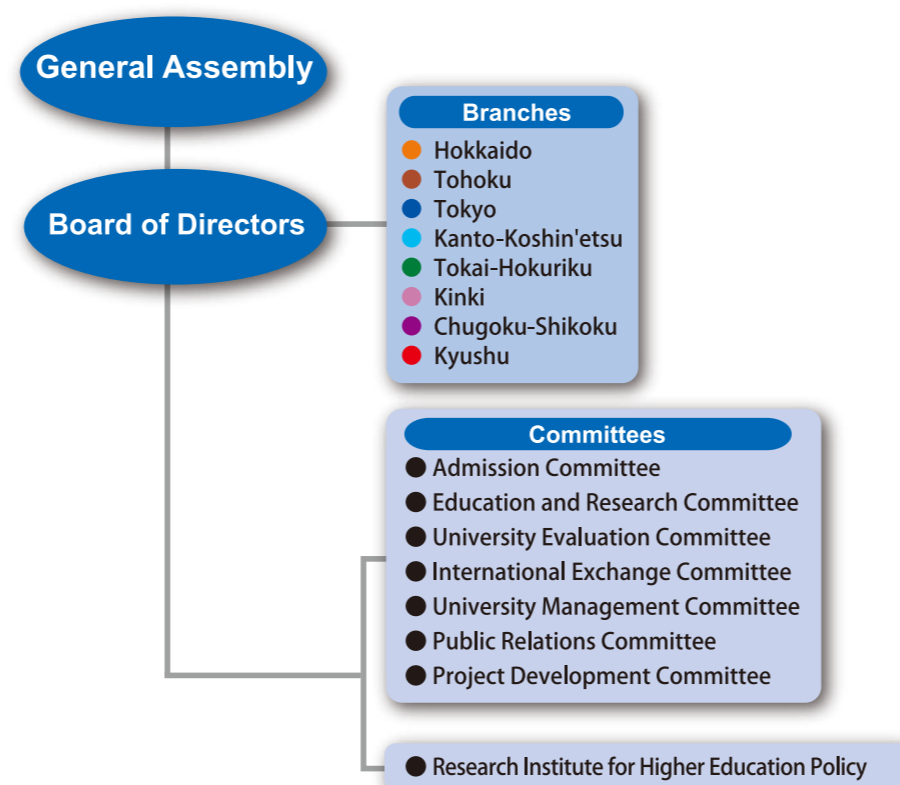
The world is currently in the era of the fourth industrial revolution, and is taking steps toward building a super smart and advanced knowledge-based society. Under these circumstances, the national government has devised the Japan Revitalization Strategy, the Town-People-Work Creation Basic Policy, and the Future Investment Strategy in rapid succession, emphasizing the important role of universities in the creation of innovation and regional revitalization. Although national universities worked to undertake various reforms during the first and second mid-term goal periods, it is feared that their education and research base may deteriorate because they are being forced to reduce their number of faculty members due to a decrease in annual government grants for operating expenses. We have sought the understanding of people from various quarters regarding this situation, including Diet members, prefectural governors, municipal mayors, and business leaders. Consequently, we have succeeded in stemming the reduction of government grants for operating expenses in the third mid-term goal period. We must work to ensure increases in the grants and accelerate national university reforms in the future.

To this end, we first need to fully recognize that national universities are higher education institutions that receive a large amount of grant money from the national government and to properly explain their role and achievements to taxpayers. The most important stakeholders for universities are students. We should make every effort to ensure that younger generations who forge the future of the global community can utilize their various abilities for the development of society and harmonious coexistence within the global community. The percentage of students enrolling in universities in Japan is not high by international standards, and the number of international students and mature students is also small. This indicates that universities in Japan are not functioning well as places of diverse interaction and learning. National universities are required to address their common issues, in particular, of pursuing educational quality, globalization, and industry-university cooperation, while working closely with other universities.

With regards to education, it is important to appropriately connect secondary education to basic, general, and professional education at universities, and then to graduate-level education through the high school-university articulation system reforms, and also to increase the mobility of students at home and abroad. To accept more international students, it is essential to provide classes in multiple languages and improve international student dormitories. In order for national universities to play a core role in regional revitalization, it is necessary to strengthen cooperation with the government and the industrial sector. National universities are also required to work to raise research funds, promote the employment of young researchers, and reinforce the world's top-level research centers to enhance basic science capabilities. To this end, it is an urgent issue to attract donations and investment to build up each university's own funds.

To encourage these reforms, the Japan Association of National Universities has issued a statement: "Strengthening the Governance Reform of National Universities," has presented an interim report: "A Vision for the Future of National Universities in Higher Education," and has begun exploring the promotion of joint research through full-scale collaboration between industry, academia and government. Based on these efforts, the Japan Association of National Universities intends to continue its work to help national universities offer greater value. Your continued support and cooperation is greatly appreciated.

Organization Chart



Governance

(As of October 1, 2017)

Board Members

•Members of the Board

Juichi Yamagiwa / President / President, Kyoto University
Seiichi Matsuo / Vice President / President, Nagoya University
Kyosuke Nagata / Vice President / President, University of Tsukuba
Masaaki Oka / Vice President / President, Yamaguchi University
Kimiko Murofushi / Vice President / President, Ochanomizu University

Kenji Yamamoto / Senior Managing Director, JANU / Former President, Wakayama University
Masato Kitani / Managing Director / Director-General, JANU

Susumu Satomi / Special Adviser / President, Tohoku University
Makoto Gonokami / Special Adviser / President, The University of Tokyo
Toyoharu Nawa / President, Hokkaido University
Haruo Jaana / President, Hokkaido University of Education
Akira Iwabuchi / President, Iwate University
Yoshinao Mishima / President, Tokyo Institute of Technology
Nobuo Mimura / President, Ibaraki University
Hiroki Yamaguchi / President, Saitama University
Takeshi Tokuhisa / President, Chiba University
Sugata Takahashi / President, Niigata University
Mitsufumi Mayumi / President, University of Fukui
Takashi Onishi / President, Toyohashi University of Technology
Shojiro Nishio / President, Osaka University
Hiroshi Takeda / President, Kobe University
Yuichi Ohashi / President, Ehime University
Chiharu Kubo / President, Kyushu University
Shinji Harada / President, Kumamoto University

•Auditors

Katsumi Nakai / President, Fukushima University
Koichi Tadenuma / President, Hitotsubashi University

Assistant to President

Toshisada Deguchi / President, Tokyo Gakugei University
Akihiko Tanaka / President, National Graduate Institute for Policy Studies
Tomoyasu Ishida / President, Utsunomiya University
Tetsuo Asano / President, Japan Advanced Institute of Science and Technology
Hitomi Goto / President, Aichi University of Education
Akio Komori / President, National Institutes of Natural Sciences

Objectives and Activities of JANU

● Objectives of JANU (Article 4 of the Articles of Incorporation)

JANU shall contribute to the promotion of national university corporations and the improvement of standards of higher education and academic research in our nation with well-balanced development, creating the circumstances to ensure outstanding achievements conducted by national university corporations on various activities related to education, research and contribution to the society.

● Activities of JANU (Article 5 of the Articles of Incorporation)

- (1) Activities necessary for national universities to promote high-quality education, academic research, and social contribution
- (2) Studies and research necessary for universities' voluntary policy-making activities as well as for proposals concerning the national government's policies on higher education, academic research, etc.
- (3) International exchange programs based on international partnership
- (4) Support for the management and administration of national university corporations
- (5) Other activities necessary for achieving the objectives of JANU

Major Activities in FY 2016

◎General Assembly meetings / Board of Directors meetings

Ordinary General Assembly meetings (Jun., Nov., Jan., Mar.)
Board of Directors meetings (Apr., May, Jul., Oct., Dec., Feb.)

◎Requests / Statements

"Views on the Institutionalization of New Higher Education Institutions That Provide Practical Vocational Education" expressed (Apr.)

"Increase in the National Budget for National Universities (Request) and Tax Reforms (Request)" submitted (Aug.)

"Statement on the View of the Ministry of Finance at the Fiscal System Council Meeting" released (Nov.)
"Views on the Future System for Joint Usage and Joint Research" expressed (Nov.)

"Resolution on an Increase in the National Budget for National Universities in the Fiscal 2017 Budget (Diet Members' League for National University Promotion)": Request activities (Nov., Dec.)

"Views of the Japan Association of National Universities on Description-type Questions in the University Entrance Center Examination" expressed (Dec.)

"Views of the Japan Association of National Universities on Security Export Control" submitted (Dec.)

"Views on the Fiscal 2017 Budget for Government Grants for National University Operating Expenses (President's comment)" submitted (Dec.)

◎ International activities

Newly participated in the International Association of Universities (IAU) (Oct.)

Signed an MOU on Exchange with Universities UK (UUK) (Oct.)

◎Seminars/ Training sessions

Liaison Meeting for Board Members of National Universities (Jun., Oct.), Seminar for Newly Appointed Presidents (Jun.), Training Session for Section/Department Managers of National Universities (Jul.), Top Seminar (Aug.), University Management Seminar (Sep., Nov.), Liaison Committee of Public Relations Officials of National Universities "Study Session for Public Relations" (Sep.), University Reform Symposium (Oct.), Study Session for Young Staff of National Universities (Dec.)

◎Publications / Public relations

Public relations magazine "National Universities" published (Jun., Oct., Dec., Mar.)
Extra issue of the public relations magazine "National Universities" published (Jul.)

Booklet "National University Reforms" published (Jun.)
Discussion meeting with editorial writers held (Jun.)

Briefing session for new faculties and graduate schools of national universities held (Nov.)



Written request submitted to
Mr. Hirokazu Matsuno, MEXT Minister



MOU on Exchange signed with
Universities UK (UUK)



Public relations magazine
"National Universities" published