

Members of the JANU

● Regular Members (86 national universities)

● Special Members (4 organizations)

National Institutes for the Humanities,
National Institutes of Natural Sciences,
High Energy Accelerator Research Organization,
Research Organization of Information and Systems

Nation of Knowledge

Tokyo Branch

(12 universities)

The University of Tokyo,
Tokyo Medical and Dental University,
Tokyo University of Foreign Studies,
Tokyo Gakugei University,
Tokyo University of Agriculture and Technology,
Tokyo University of the Arts,
Tokyo Institute of Technology,
Tokyo University of Marine Science and Technology,
Ochanomizu University,
The University of Electro-Communications,
Hitotsubashi University,
National Graduate Institute for Policy Studies

Kanto-Koshin'etsu Branch

(14 universities)

Ibaraki University, University of Tsukuba,
Tsukuba University of Technology, Utsunomiya University,
Gunma University, Saitama University, Chiba University,
Yokohama National University,
The Graduate University for Advanced Studies,
Niigata University, Nagaoka University of Technology,
Joetsu University of Education,
University of Yamanashi, Shinshu University

Tokai-Hokuriku Branch

(12 universities)

University of Toyama, Kanazawa University,
Japan Advanced Institute of Science and Technology,
University of Fukui, Gifu University,
Shizuoka University,
Hamamatsu University School of Medicine,
Nagoya University,
Aichi University of Education,
Nagoya Institute of Technology,
Toyohashi University of Technology,
Mie University

Chugoku-Shikoku Branch

(10 universities)

Tottori University, Shimane University,
Okayama University, Hiroshima University, Yamaguchi University,
Tokushima University, Naruto University of Education,
Kagawa University, Ehime University,
Kochi University

Kyushu Branch

(11 universities)

Fukuoka University of Education, Kyushu University,
Kyushu Institute of Technology,
Saga University, Nagasaki University,
Kumamoto University, Oita University,
University of Miyazaki, Kagoshima University,
National Institute of Fitness and Sports in Kanoya,
University of the Ryukyus

Hokkaido Branch

(7 universities)

Hokkaido University,
Hokkaido University of Education,
Muroran Institute of Technology,
Otaru University of Commerce,
Obihiro University of Agriculture & Veterinary Medicine,
Asahikawa Medical University,
Kitami Institute of Technology

Tohoku Branch

(7 universities)

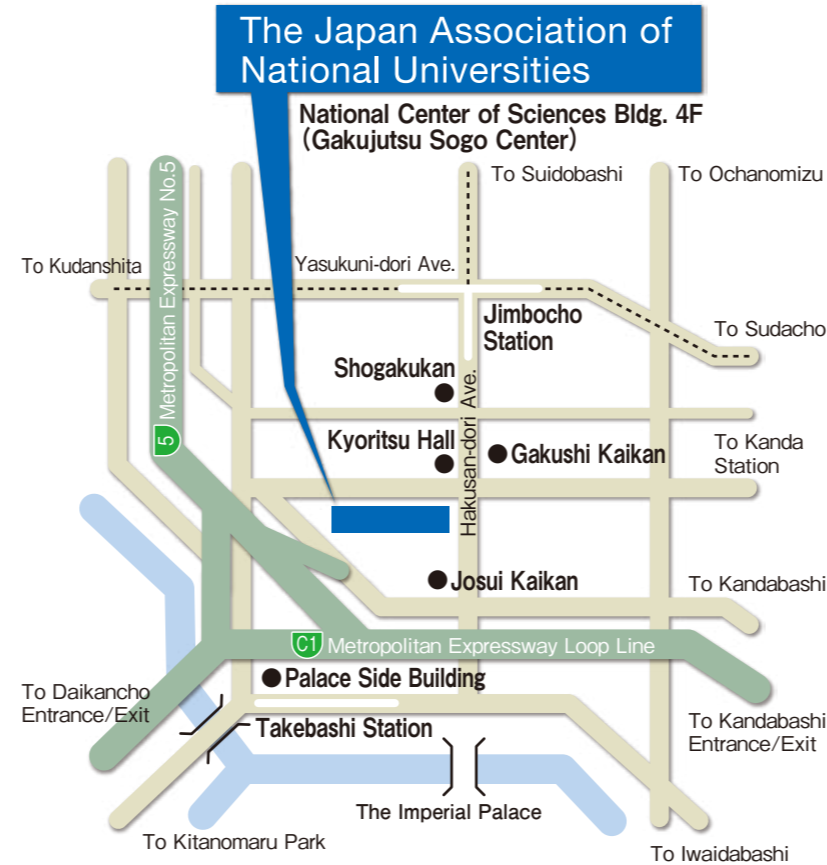
Hirosaki University,
Iwate University,
Tohoku University,
Miyagi University of Education,
Akita University,
Yamagata University,
Fukushima University

Kinki Branch

(13 universities)

Shiga University,
Shiga University of Medical Science,
Kyoto University,
Kyoto University of Education,
Kyoto Institute of Technology,
Osaka University,
Osaka Kyoiku University,
Hyogo University of Teacher Education,
Kobe University,
Nara University of Education,
Nara Women's University,
Nara Institute of Science and Technology,
Wakayama University

Access



Directions

By subway

3-minutes walk from Jimbocho Station, Exit A8
Take Hanzomon Line (Tokyo Metro), Mita Line (Toei),
or Shinjuku Line (Toei)
4-minutes walk from Takebashi Station, Exit 1B
Take Tozai Line (Tokyo Metro)

By car

Take Metropolitan Expressway and get off at Daikancho
Exit, Kandabashi Exit or Hitotsubashi Exit.



The Japan Association of
National Universities

<http://www.janu.jp>

National Center of Sciences Bldg. 4F
2-1-2 Hitotsubashi, Chiyodaku, Tokyo 101-0003, Japan
Tel:+81-3-4212-3506 Fax:+81-3-4212-3509 E-mail:info@janu.jp

The Japan Association of
National Universities

2018



The Japan Association of
National Universities

Message from the President

The national universities are facing the third mid-term goal period since their reorganization as independent administrative entities. These national universities are expected to achieve further progress based on the reforms that have been implemented so far. There are 86 eighty-six national universities in Japan, widely varying in size and area of focus. Most of the national universities were established based on the principle that one national university should be established in each prefecture to attain educational equality under the National School Establishment Act issued in 1949. All national universities have graduate schools, in which almost 70% of the graduate school students across the country are engaged in research. Thus, national universities play a central role in research activities in Japan. National university hospitals have also made a core contribution to advanced medicine and community medicine. Questions are currently being raised about how national universities will respond to the needs of the times, taking advantage of their diversity and their positions at the vanguard of academia.



JANU President
Juichi Yamagiwa
(President, Kyoto University)

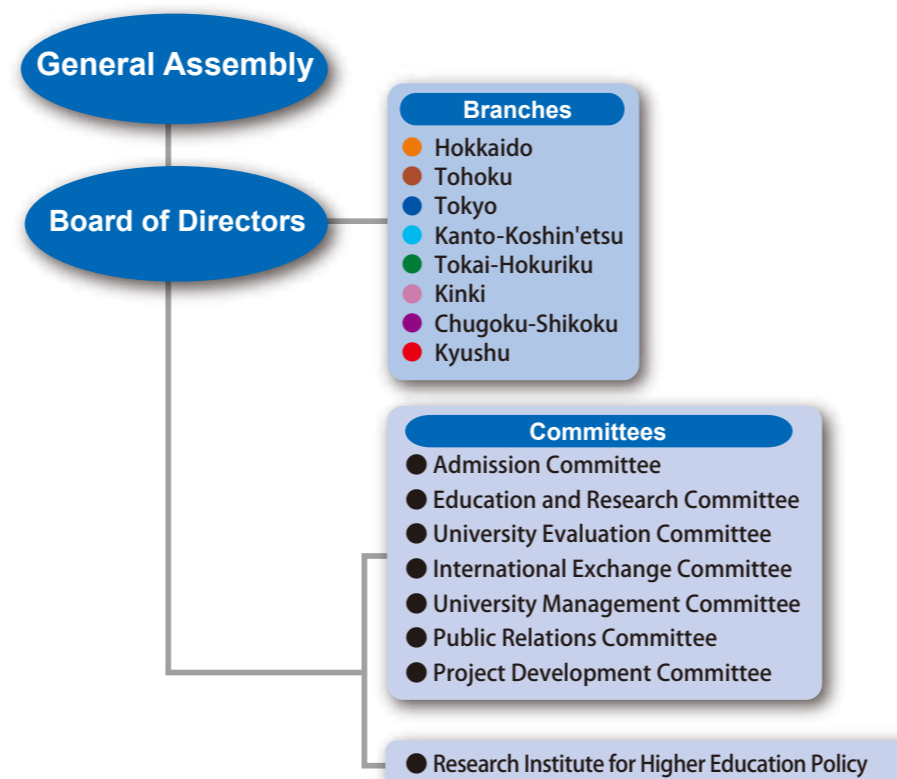
The world is currently in the era of the fourth industrial revolution, and is taking steps toward building a super smart and advanced knowledge-based society. Under these circumstances, the national government has focused on the significance of creating innovation, revitalizing regional areas and developing human resources. It recognizes these targets as the principal pillars of our national growth strategy in the Council on Economic and Fiscal Policy, the Growth Strategy Council-Investing for the Future, the Town-People-Work Creation Council and the Council for Designing 100-year Life Society. The national government also emphasizes the importance of the role played by universities to achieve these key goals. Although national universities worked to undertake various reforms during the first and second mid-term goal periods, it is feared that their education and research base may deteriorate because they are being forced to reduce their number of faculty members due to a decrease in annual government grants for operating expenses. As a result of discussing this situation with various parties including Diet members, governors, municipal mayors and business leaders, and also succeeding in obtaining their understanding and support, we have managed to prevent further reduction of government grants for operating expenses in the third mid-term goal period. We must work to ensure increases in the grants and accelerate national university reforms in the future.

To this end, we first need to fully recognize that national universities are higher education institutions that receive a large amount of grant money from the national government and to properly explain their role and achievements to taxpayers. The most important stakeholders for universities are students. We should make every effort to ensure that younger generations who forge the future of the global community can utilize their various abilities for the development of society and harmonious coexistence within the global community. The percentage of students enrolling in universities in Japan is not high by international standards, and the number of international students and mature students is also small. This indicates that universities in Japan are not functioning well as places of diverse interaction and learning. National universities are required to address their common issues, in particular, of pursuing educational quality, globalization, and industry-university cooperation, while working closely with other universities.

With regards to education, it is important to appropriately connect secondary education to basic, general, and professional education at universities, and then to graduate-level education through the high school-university articulation system reforms, and also to increase the mobility of students at home and abroad. To accept more international students, it is essential to provide classes in multiple languages and improve international student dormitories. In order to play a key role in revitalizing regional areas, it is necessary for national universities to enhance their cooperation with the government and industrial sector in terms of collaborative research and recurrent education. National universities are also required to work to raise research funds, promote the employment of young researchers, and reinforce the world's top-level research centers to enhance basic science capabilities. To this end, it is an urgent issue to attract donations and investment to build up each university's own funds.

In order to accelerate these reforms, last year, the Japan Association of National Universities (JANU) proposed the "Strengthening the Governance Reform of National Universities." This year, the association has presented the final report of "A Vision for the Future of National Universities in Higher Education." Moreover, the association has started discussions of "Promoting Extensive Industry-Academia-Government Collaborative Research", "Reforming the Governance and Enhancing the Functions to Achieve World-leading National Universities that Contribute to the Development of the Nation and the World" and "Restructuring the Human Resource Management and Stimulating Education and Research at the National Universities." Based on these efforts, the Japan Association of National Universities intends to continue its work to help national universities offer greater value. Your continued support and cooperation is greatly appreciated.

Organization Chart



Governance

(As of April 1, 2018)

Board Members

•Members of the Board

Juichi Yamagiwa / President / President, Kyoto University

Seiichi Matsuo / Vice President / President, Nagoya University

Kyosuke Nagata / Vice President / President, University of Tsukuba

Masaaki Oka / Vice President / President, Yamaguchi University

Kimiko Murofushi / Vice President / President, Ochanomizu University

Kenji Yamamoto / Senior Managing Director / Former President, Wakayama University

Masato Kitani / Managing Director / Director-General, JANU

Makoto Gonokami / Special Adviser / President, The University of Tokyo

Toyoharu Nawa / President, Hokkaido University

Haruo Jaana / President, Hokkaido University of Education

Akira Iwabuchi / President, Iwate University

Hideo Ohno / President, Tohoku University

Kazuya Masu / President, Tokyo Institute of Technology

Nobuo Mimura / President, Ibaraki University

Hiroki Yamaguchi / President, Saitama University

Takeshi Tokuhisa / President, Chiba University

Sugata Takahashi / President, Niigata University

Mitsufumi Mayumi / President, University of Fukui

Takashi Onishi / President, Toyohashi University of Technology

Shojiro Nishio / President, Osaka University

Hiroshi Takeda / President, Kobe University

Yuichi Ohashi / President, Ehime University

Chiharu Kubo / President, Kyushu University

Shinji Harada / President, Kumamoto University

•Auditors

Katsumi Nakai / President, Fukushima University

Koichi Tadenuma / President, Hitotsubashi University

Assistants to President

Toshisada Deguchi / President, Tokyo Gakugei University

Akihiko Tanaka / President, National Graduate Institute for Policy Studies

Tomoyasu Ishida / President, Utsunomiya University

Tetsuo Asano / President, Japan Advanced Institute of Science and Technology

Hitomi Goto / President, Aichi University of Education

Akio Komori / President, National Institutes of Natural Sciences

Objectives and Activities of JANU

● Objectives of JANU (Article 4 of the Articles of Incorporation)

JANU shall contribute to the promotion of national university corporations and the improvement of standards of higher education and academic research in our nation with well-balanced development, creating the circumstances to ensure outstanding achievements conducted by national university corporations on various activities related to education, research and contribution to the society.

● Activities of JANU (Article 5 of the Articles of Incorporation)

- (1) Activities necessary for national universities to promote high-quality education, academic research, and social contribution
- (2) Studies and research necessary for universities' voluntary policy-making activities as well as for proposals concerning the national government's policies on higher education, academic research, etc.
- (3) International exchange programs based on international partnership
- (4) Support for the management and administration of national university corporations
- (5) Other activities necessary for achieving the objectives of JANU

Major Activities in FY 2017

◎General Assembly meetings and Board of Directors meetings

Ordinary General Assembly meetings (Jun., Nov., Jan., Mar.)

Board of Directors meetings (Apr., May, Jul., Oct., Dec., Feb.)

◎Request and proposal activities

Released "Comments on the "Progress Report of High School/University Articulation Reforms" (Jun.)

Released "A Future Vision of National Universities in Higher Education (Midterm summary)" (Jun.)

Released "Strengthening the Governance Reform of National Universities (Statement)" (Jun.)

Released "Comments on the Implementation Policy of the Nationwide University Entrance Examinations (Proposal)" (Jul.)

Submitted "Requests Regarding Securing a Sufficient National University-related Budget and Tax Revisions" (Aug., Sep.)

Submitted a comment on the "Progress Report of the Discussion for Developing the Third Term Basic Plan for Promoting Education" (Oct.)

Released "The System for Selecting Entrants to National Universities from Fiscal Year 2020—The Fundamental Policies of the Japan Association of National Universities—" and "The President's Comments on Establishing "The System for Selecting Entrants to National Universities from Fiscal Year 2020—The Fundamental Policies of the Japan Association of National Universities—" (Nov.)

Released "The President's Comments on the National University-related Budget for Fiscal Year 2018 and Tax Revisions" (Dec.)

Released "A Future Vision of National Universities in Higher Education (Final summary)" (Jan.)

Released "Introduction of Free Education (Cost-Sharing) in Higher Education (Statement)" (Mar.)

◎International activities

Held an interactive meeting with the President of Universities UK (UUK) (Jan.)

Held a round-table meeting with the American Council on Education (ACE), and signed a memorandum of understanding (MOU) for academic exchange (Mar.)

◎Seminars and training sessions

Liaison Meeting for Board Members of National Universities (May, Oct.), Seminar for Newly Appointed Presidents (Jun.), Training Session for Section/Department Managers of National Universities (Jul.), "Top Seminar" (Aug.), University Management Seminar (Sep., Nov.), Liaison Committee of Public Relations Officials of National Universities "Study Session for Public Relations" (Sep.), University Reform Symposium (Nov.), Study Session for Young Staff of National Universities (Dec.)

◎Publication and public relations

Public relations magazine "National Universities" published (Jul., Sep., Dec., Mar.)

Extra issue of the public relations magazine "National Universities" published (Jul.)

Discussion meeting with editorial writers held (Jul.)



Meeting with Mr. Yoshimasa Hayashi,
MEXT Minister



MOU signed with
the American Council on Education (ACE)



Published the public relations
magazine "National Universities"