

# Members of the JANU

● **Regular Members (85 national university corporations, 86 national universities)**

● **Special Members (4 organizations)**

National Institutes for the Humanities,  
National Institutes of Natural Sciences,  
High Energy Accelerator Research Organization,  
Research Organization of Information and Systems

## Nation of Knowledge

### Tokyo Branch

(12 national university corporations, 12 universities)

The University of Tokyo,  
Tokyo Medical and Dental University,  
Tokyo University of Foreign Studies,  
Tokyo Gakugei University,  
Tokyo University of Agriculture and Technology,  
Tokyo University of the Arts,  
Tokyo Institute of Technology,  
Tokyo University of Marine Science and Technology,  
Ochanomizu University,  
The University of Electro-Communications,  
Hitotsubashi University,  
National Graduate Institute for Policy Studies

### Kanto-Koshin'etsu Branch

(14 national university corporations, 14 universities)

Ibaraki University, University of Tsukuba,  
Tsukuba University of Technology, Utsunomiya University,  
Gunma University, Saitama University, Chiba University,  
Yokohama National University,  
The Graduate University for Advanced Studies, SOKENDAI,  
Niigata University, Nagaoka University of Technology,  
Joetsu University of Education,  
University of Yamanashi, Shinsu University

### Tokai-Hokuriku Branch

(11 national university corporations, 12 universities)

University of Toyama, Kanazawa University,  
Japan Advanced Institute of Science and Technology,  
University of Fukui,  
Shizuoka University,  
Hamamatsu University School of Medicine,  
Tokai National Higher Education and Research System, Gifu University,  
Tokai National Higher Education and Research System, Nagoya University,  
Aichi University of Education,  
Nagoya Institute of Technology,  
Toyohashi University of Technology,  
Mie University

### Chugoku-Shikoku Branch

(10 national university corporations, 10 universities)

Tottori University, Shimane University,  
Okayama University, Hiroshima University, Yamaguchi University,  
Tokushima University, Naruto University of Education,  
Kagawa University, Ehime University,  
Kochi University

### Kyushu Branch

(11 national university corporations, 11 universities)

University of Teacher Education Fukuoka, Kyushu University,  
Kyushu Institute of Technology,  
Saga University, Nagasaki University,  
Kumamoto University, Oita University,  
University of Miyazaki, Kagoshima University,  
National Institute of Fitness and Sports in Kanoya,  
University of the Ryukyus

### Hokkaido Branch

(7 national university corporations, 7 universities)

Hokkaido University,  
Hokkaido University of Education,  
Muroran Institute of Technology,  
Otaru University of Commerce,  
Obihiro University of Agriculture and Veterinary Medicine,  
Asahikawa Medical University,  
Kitami Institute of Technology

### Tohoku Branch

(7 national university corporations, 7 universities)

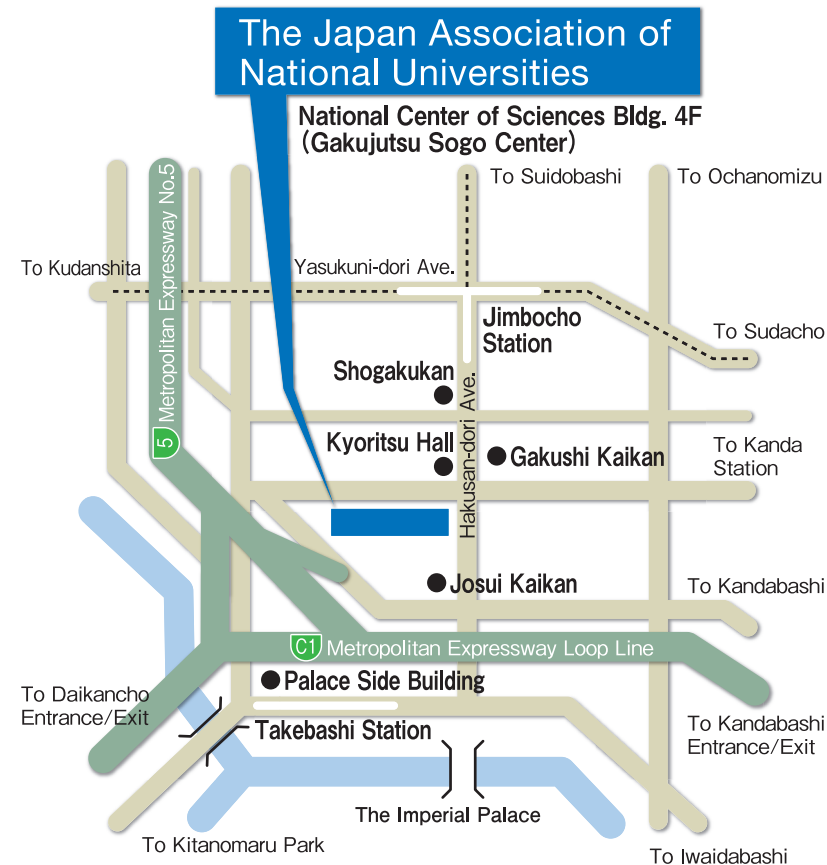
Hirosaki University,  
Iwate University,  
Tohoku University,  
Miyagi University of Education,  
Akita University,  
Yamagata University,  
Fukushima University

### Kinki Branch

(13 national university corporations, 13 universities)

Shiga University,  
Shiga University of Medical Science,  
Kyoto University,  
Kyoto University of Education,  
Kyoto Institute of Technology,  
Osaka University,  
Osaka Kyoiku University,  
Hyogo University of Teacher Education,  
Kobe University,  
Nara University of Education,  
Nara Women's University,  
Nara Institute of Science and Technology,  
Wakayama University

## Access



## Directions

### By subway

3-minutes walk from Jimbocho Station, Exit A8  
Take Hanzomon Line (Tokyo Metro), Mita Line (Toei),  
or Shinjuku Line (Toei)  
4-minutes walk from Takebashi Station, Exit 1B  
Take Tozai Line (Tokyo Metro)

### By car

Take Metropolitan Expressway and get off at Daikancho  
Exit, Kandabashi Exit or Hitotsubashi Exit.



The Japan Association of  
National Universities

<https://www.janu.jp/>

National Center of Sciences Bldg. 4F  
2-1-2 Hitotsubashi, Chiyoda-ku, Tokyo 101-0003, Japan  
Tel:+81-3-4212-3506 Fax:+81-3-4212-3509 E-mail:info@janu.jp

The Japan Association of  
National Universities

2021



The Japan Association of  
National Universities

## Message from the President

Today, the world is facing an unprecedented global challenge: the onslaught of a new coronavirus infection. Moreover, the coronavirus epidemic is not only a challenge in itself, but also a magnifying glass that has brought to light a variety of issues. In a globalized world, problems of population, food and water, economic competition and economic disparity, energy and environmental pollution, and other intractable issues arise from a combination of causes, generating even more diverse problems. In addition, Japan, as an advanced country, is facing the major challenges of declining birthrates, aging society, and regional decline.

The national university system consists of 86 universities, each with its own unique characteristics. The approximately 60,000 faculty members are responsible for the education of approximately 590,000 undergraduate and graduate students, while conducting a wide variety of research.

Such diversity becomes a significant force to promote co-creation that transcends all barriers and realize a flexible and inclusive society in the era of VUCA (Volatility, Uncertainty, Complexity, and Ambiguity), where the future is not a simple extension of the present.

National universities located in all prefectures have played a central role in the revitalization of each region (area) through the creation of innovation and the development of excellent human resources. We are aware that national universities are bases that support the culture, society, and economy of each region (area), and that they have a responsibility to the industry, medical care, welfare, and education of the region (area). As regional development becomes an important issue for Japan against the backdrop of a declining population and a paradigm shift in industry toward knowledge-intensive sectors, we, the Japan Association of National Universities, believe that it is our duty to respond to the heightened expectations placed on the national universities.

FY2021 will be a year for us to summarize the 3rd Medium-Term Objectives Period and prepare for the 4th Period. It is vital for us not only to face new issues but also to pave the way to solve issues that have been unresolved. Accordingly, it is of great significance to clarify what roles and functions national university corporations are expected and entrusted by the national government to fulfill, what resources are required to perform these roles and functions, and what measures are necessary to ensure the resources are prepared. It is also essential that all people involved share awareness of these matters.

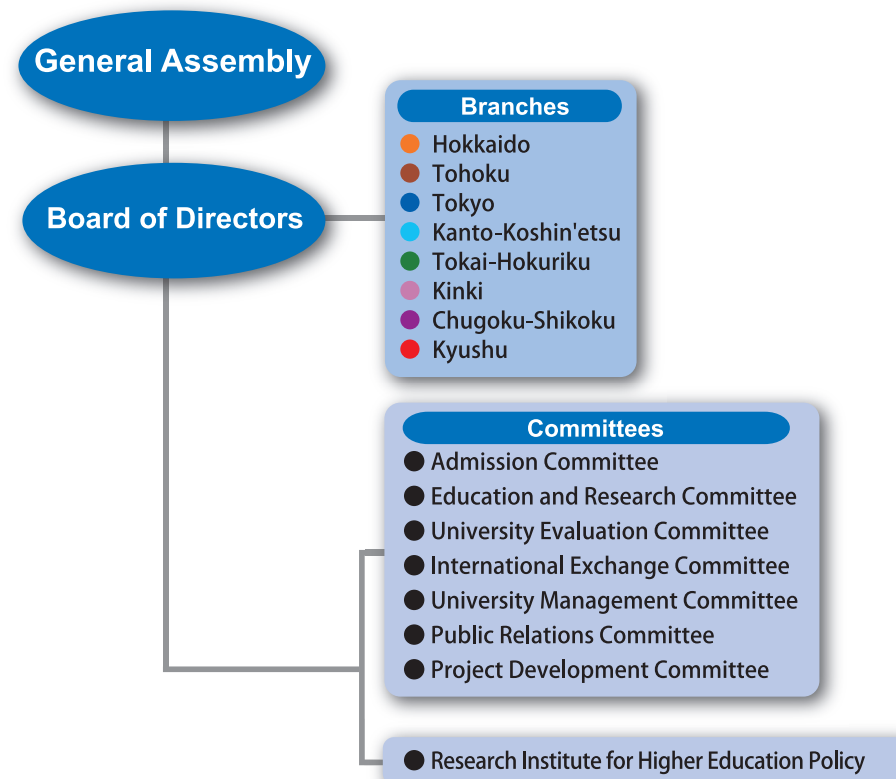
By further demonstrating their characteristics and strengths, each national university will move forward together with a diverse range of stakeholders, including not only students and faculty members, but also the national government, local communities, and businesses. The Japan Association of National Universities will strive to gain the support of all stakeholders surrounding national universities by proactively disseminating information on these autonomous efforts to society.

I believe that universities in the new normal era should not simply be shaped by adapting to the drastically changing society, but should be defined by their own vision of the future of society, by envisioning and proposing a desirable future, and by being involved in social implementation. National universities will do their utmost to build on all the knowledge they possess, and we would like to ask for the continued support of all concerned for national universities and the Japan Association of National Universities.



JANU President  
NAGATA Kyosuke  
(University of Tsukuba)

## Organization Chart



## Governance

(As of June 14, 2021)

### Board Members

#### •Members of the Board

NAGATA Kyosuke / President, University of Tsukuba  
 OHNO Hideo / Vice President / President, Tohoku University  
 NISHIO Shojiro / Vice President / President, Osaka University  
 USHIKI Tatsuo / Vice President / President, Niigata University  
 HAYASHI Kayoko / Vice President / President, Tokyo University of Foreign Studies  
 YAMAGUCHI Hiroki / Senior Managing Director / Former President, Saitama University  
 TOWATARI Hayashi / Managing Director / Director-General, JANU  
 HOUKIN Kiyohiro / President, Hokkaido University  
 KUGA Yoshikazu / President, Muroran Institute of Technology  
 ANAZAWA Makoto / President, Otaru University of Commerce  
 TAMATE Hidetoshi / President, Yamagata University  
 TANAKA Yujiro / President, Tokyo Medical and Dental University  
 MASU Kazuya / President, Tokyo Institute of Technology  
 NAKAYAMA Toshinori / President, Chiba University  
 SAITO Shigeru / President, University of Toyama  
 MATSUO Seiichi / President, Tokai National Higher Education and Research System  
 MINATO Nagahiro / President, Kyoto University  
 IMAOKA Haruki / President, Nara Women's University  
 ITOH Chihiro / President, Wakayama University  
 MAKINO Hirofumi / President, Okayama University  
 OKA Masaaki / President, Yamaguchi University  
 SAKURAI Katsutoshi / President, Kochi University  
 ISHIBASHI Tatsuro / President, Kyushu University  
 SANO Akira / President, Kagoshima University

#### •Auditors

TANO Shun-ichi / President, The University of Electro-Communications  
 UEDA Takanori / President, University of Fukui

### Assistants to President

FUJII Teruo / President, The University of Tokyo  
 NAKANO Satoshi / President, Hitotsubashi University  
 HASEGAWA Mariko / President, The Graduate University for Advanced Studies, SOKENDAI  
 YAMAZAKI Koetsu / President, Kanazawa University  
 NODA Atsunori / President, Aichi University of Education  
 HIRAKAWA Minami / President, National Institutes for the Humanities

## Objectives and Activities of JANU

### ● Objectives of JANU (Article 4 of the Articles of Incorporation)

JANU shall contribute to the promotion of national university corporations and the improvement of standards of higher education and academic research in our nation with well-balanced development, creating the circumstances to ensure outstanding achievements conducted by national university corporations on various activities related to education, research and contribution to the society.

### ● Activities of JANU (Article 5 of the Articles of Incorporation)

- (1) Activities necessary for national universities to promote high-quality education, academic research, and social contribution
- (2) Studies and research necessary for universities' voluntary policy-making activities as well as for proposals concerning the national government's policies on higher education, academic research, etc.
- (3) International exchange programs based on international partnership
- (4) Support for the management and administration of national university corporations
- (5) Other activities necessary for achieving the objectives of JANU

## Major Activities in FY2020

### ◎ General Assembly meetings and Board of Directors meetings

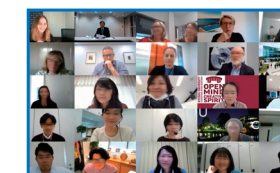
- General Assembly meetings (Jun., Nov., Jan., Mar.)
- Board of Directors meetings (Apr., May, Jul., Oct., Dec., Feb.)

### ◎ Request and proposal activities

- Submitted an urgent request for the response to COVID-19 at national university corporations (Apr.)
- Submitted an urgent request for financial support for students responding to COVID-19 (in collaboration between the Japan Association of National Universities, the Japan Association of Public Universities, and the Federation of Japanese Private Colleges and Universities Associations) (May)
- Submitted a request for financial input to university hospitals across Japan (in collaboration between the Association of Japan Medical Colleges, the Committee Addressing COVID-19-Related Issues, the Japanese Nursing Association, and the University of Tokyo) (May)
- Submitted a request concerning the impacts of the novel coronavirus (COVID-19) on international students and researchers coming to universities in Japan (Jul.)
- Submitted "Requests Regarding Securing a Sufficient National University-related Budget and Tax Revisions for FY2021" (Sep., Oct.)
- Announced "Issues to Be Considered Regarding the Ideal State of National University Corporations toward the 4th Medium-Term Objectives Period (Interim Summary)" (Nov.)
- Notified "The desirable form of international exchange triggered by COVID-19 pandemic" (Feb.)
- Announced "Consideration of the 'Visualization' of Costs at National University Corporations (Final Summary)" (Mar.)
- Issued "Serving Society under the New Normal: A Statement from National Universities" (Mar.)



Written request submitted to Mr. HAGIUDA Koichi, MEXT Minister



Japan - Australia University Staff Training Program 2020



Publication of the National Universities magazine and other reports



70th Anniversary Ceremony

### ◎ International Activities

- Japan-Australia University Staff Training Program (Oct., Nov.)
- U.S.-Japan Higher Education Engagement Study (USJP HEES) (year-round)

### ◎ Seminars and training sessions

- "Top Seminar" (Aug.)
- University-Design-Workshop (Sep.)
- Study Session for Public Relations (Sep.)
- Liaison Meeting for Board Members of National Universities (Oct.)
- University Reform Symposium (Nov.)
- University Management Seminar (Dec.)
- Study Session for Young Staff of National Universities (Dec.)
- Seminar for Newly Appointed Presidents (Feb.)

### ◎ Publication and public relations

- Public relations magazine "National Universities" published (Jun., Nov., Mar.)
- Extra issue of the public relations magazine "National Universities" published (Jun.)
- Discussion meeting with editorial writers (Oct.)

### ◎ Ceremonies

- 70th Anniversary Ceremony (Mar.)