

Members of the JANU

● **Regular Members (82 national university corporations, 86 national universities)**

● **Special Members (4 organizations)**

National Institutes for the Humanities,
National Institutes of Natural Sciences,
High Energy Accelerator Research Organization,
Research Organization of Information and Systems

Nation of Knowledge

Tokyo Branch

(12 national university corporations, 12 universities)

The University of Tokyo,
Tokyo Medical and Dental University,
Tokyo University of Foreign Studies,
Tokyo Gakugei University,
Tokyo University of Agriculture and Technology,
Tokyo University of the Arts,
Tokyo Institute of Technology,
Tokyo University of Marine Science and Technology,
Ochanomizu University,
The University of Electro-Communications,
Hitotsubashi University,
National Graduate Institute for Policy Studies

Kanto-Koshin'etsu Branch

(14 national university corporations, 14 universities)

Ibaraki University, University of Tsukuba,
Tsukuba University of Technology, Utsunomiya University,
Gunma University, Saitama University, Chiba University,
Yokohama National University,
The Graduate University for Advanced Studies, SOKENDAI,
Niigata University, Nagaoka University of Technology,
Joetsu University of Education,
University of Yamanashi, Shinsu University

Tokai-Hokuriku Branch

(11 national university corporations, 12 universities)

University of Toyama, Kanazawa University,
Japan Advanced Institute of Science and Technology,
University of Fukui,
Shizuoka University,
Hamamatsu University School of Medicine,
Tokai National Higher Education and Research System, Gifu University,
Tokai National Higher Education and Research System, Nagoya University,
Aichi University of Education,
Nagoya Institute of Technology,
Toyohashi University of Technology,
Mie University

Chugoku-Shikoku Branch

(10 national university corporations, 10 universities)

Tottori University, Shimane University,
Okayama University, Hiroshima University, Yamaguchi University,
Tokushima University, Naruto University of Education,
Kagawa University, Ehime University,
Kochi University

Kyushu Branch

(11 national university corporations, 11 universities)

University of Teacher Education Fukuoka, Kyushu University,
Kyushu Institute of Technology,
Saga University, Nagasaki University,
Kumamoto University, Oita University,
University of Miyazaki, Kagoshima University,
National Institute of Fitness and Sports in Kanoya,
University of the Ryukyus

Hokkaido Branch

(5 national university corporations, 7 universities)

Hokkaido University,
Hokkaido University of Education,
Muroran Institute of Technology,
Hokkaido Higher Education and Research System, Otaru University of Commerce,
Hokkaido Higher Education and Research System, Obihiro University of Agriculture and Veterinary Medicine,
Hokkaido Higher Education and Research System, Kitami Institute of Technology
Asahikawa Medical University

Tohoku Branch

(7 national university corporations, 7 universities)

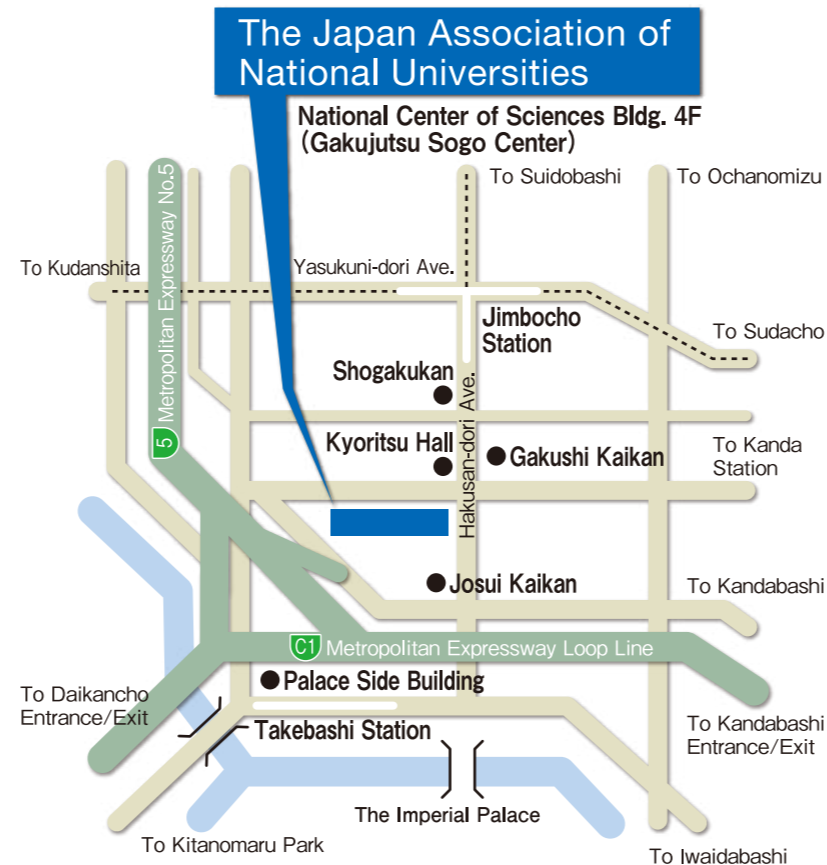
Hirosaki University,
Iwate University,
Tohoku University,
Miyagi University of Education,
Akita University,
Yamagata University,
Fukushima University

Kinki Branch

(12 national university corporations, 13 universities)

Shiga University,
Shiga University of Medical Science,
Kyoto University,
Kyoto University of Education,
Kyoto Institute of Technology,
Osaka University,
Osaka Kyoiku University,
Hyogo University of Teacher Education,
Kobe University,
NARA NATIONAL INSTITUTE OF HIGHER EDUCATION AND RESEARCH, Nara University of Education,
NARA NATIONAL INSTITUTE OF HIGHER EDUCATION AND RESEARCH, Nara Women's University,
Nara Institute of Science and Technology,
Wakayama University

Access



Directions

By subway

3-minutes walk from Jimbocho Station, Exit A8
Take Hanzomon Line (Tokyo Metro), Mita Line (Toei),
or Shinjuku Line (Toei)
4-minutes walk from Takebashi Station, Exit 1B
Take Tozai Line (Tokyo Metro)

By car

Take Metropolitan Expressway and get off at Daikancho Exit, Kandabashi Exit or Hitotsubashi Exit.



The Japan Association of National Universities

<https://www.janu.jp/>

National Center of Sciences Bldg. 4F
2-1-2 Hitotsubashi, Chiyoda-ku, Tokyo 101-0003, Japan
Tel:+81-3-4212-3506 Fax:+81-3-4212-3509 E-mail:info@janu.jp

The Japan Association of National Universities

2022



The Japan Association of National Universities

Message from the President

The COVID-19 pandemic has highlighted various global challenges and social issues, such as division and inequalities. As a result, many people have come to think seriously about the issues surrounding society. National universities in Japan have been implementing food aid programs to support students, developing distance learning and physical and mental care programs to support students' academic activities, setting up "COVID-19 aftercare outpatient clinics" and COVID-19 vaccine centers for not only university faculty, staff, and students, but also the neighborhood, research activities for virus countermeasures. In addition to the efforts of individual universities, we have contributed by responding to COVID-19 as a national and regional center.



JANU President
NAGATA Kyosuke
(University of Tsukuba)

The national university system consists of 86 universities, each with its unique characteristics. Since its establishment, the member universities all have played an active role in providing education and promoting research at the world's highest level, inheriting and developing important academic disciplines, and ensuring equal opportunities for higher education across the nation. The approximately 60,000 faculty members are responsible for the education of about 590,000 undergraduate and graduate students while conducting a wide variety of research. A diverse academic knowledge possessed by national universities as "intellectual assets" helps solve global issues, such as the achievement of SDGs and the promotion of green recovery and carbon neutrality. At the same time, it will become a powerful means to realize a sustainable and inclusive society with high resilience to disasters and infectious diseases.

National universities located in all prefectures have played a central role in the revitalization of each region (area) through the creation of innovation and the development of excellent human resources. We are aware that national universities are bases that support the culture, society, and economy of each region (area), and that they have a responsibility to the industry, medical care, welfare, and education of the region (area). As regional development becomes an important issue for Japan against the backdrop of a declining population and a paradigm shift in industry toward knowledge-intensive sectors, we, the Japan Association of National Universities, believe that it is our responsibility to respond to the heightened expectations placed on the national universities.

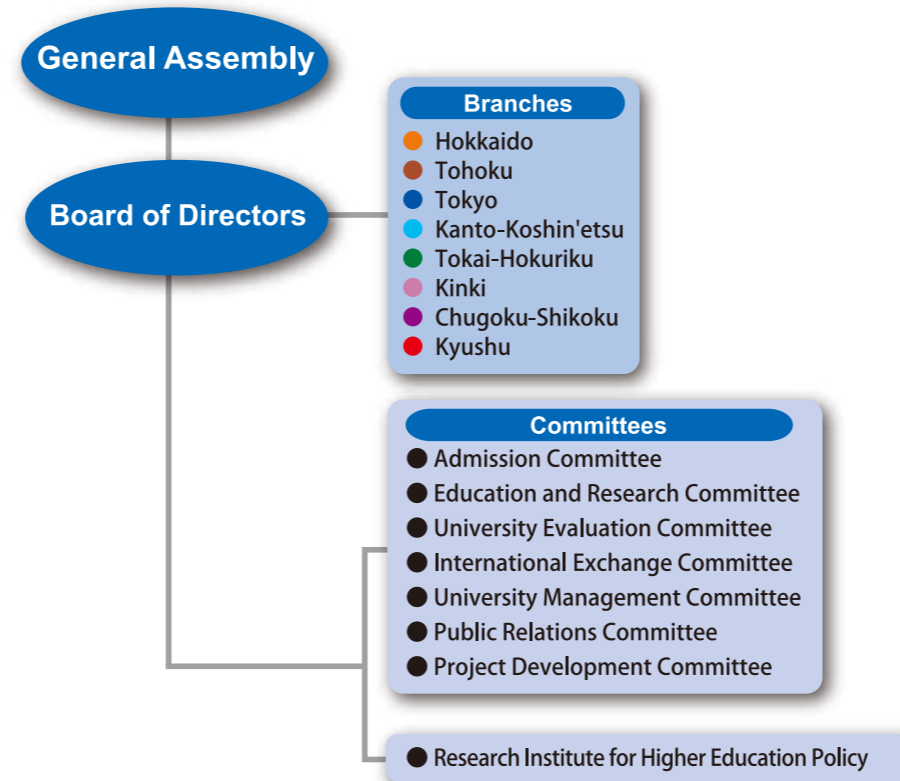
In addition, national universities serve as a contact point in each region with the global society. We support long-term soft diplomacy efforts through human development and take the lead in ensuring the integrity of research and education on the international stage. Through these initiatives, national universities will help realize a safe and secure world based on universal values.

FY2022 will be a milestone that marks the first year of the fourth Medium-Term Objective Period. National universities, individually and as a whole, will strengthen and expand their functions to enable the sustainable development of Japan as a nation and the realization of a resilient and inclusive society. By using digital technology, we will promote education and research and contribute to society while strengthening the functions of university management. Moreover, we will play a central role in developing human resources who have a good command of digital science technology that can meet the demands of society, such as artificial intelligence (AI) technology and big data analysis.

To shape the New Normal based on new ideas and their practice, national universities, which are "fountains of knowledge", will emphasize gender and human diversity and move forward with various stakeholders. Furthermore, national universities are determined as a whole to create a circulation of knowledge and return the knowledge to society, playing a leading role in the creation of new value and the establishment of social foundations in a new era with COVID-19. The Japan Association of National Universities will endeavor to meet the expectations of all stakeholders surrounding national universities by proactively disseminating information on these autonomous efforts to society.

We look forward to and are grateful for all your continued support for national universities and the Japan Association of National Universities.

Organization Chart



Governance

(As of April 1, 2022)

Board Members

•Members of the Board

NAGATA Kyosuke / President / President, University of Tsukuba
 OHNO Hideo / Vice President / President, Tohoku University
 NISHIO Shojiro / Vice President / President, Osaka University
 USHIKI Tatsuo / Vice President / President, Niigata University
 HAYASHI Kayoko / Vice President / President, Tokyo University of Foreign Studies
 IDA Ryuichi / Senior Managing Director / Former President, Shiga University
 TOWATARI Hayashi / Managing Director / Director-General, JANU
 HOUKIN Kiyohiro / President, Hokkaido University
 KUGA Yoshikazu / President, Muroran Institute of Technology
 ANAZAWA Makoto / President, Otaru University of Commerce
 TAMATE Hidetoshi / President, Yamagata University
 TANAKA Yujiro / President, Tokyo Medical and Dental University
 MASU Kazuya / President, Tokyo Institute of Technology
 NAKAYAMA Toshinori / President, Chiba University
 SAITO Shigeru / President, University of Toyama
 MATSUO Seiichi / President, Tokai National Higher Education and Research System
 MINATO Nagahiro / President, Kyoto University
 SHIOZAKI Kazuhiro / President, Nara Institute of Science and Technology
 ITOH Chihiro / President, Wakayama University
 MAKINO Hirofumi / President, Okayama University
 SAKURAI Katsutoshi / President, Kochi University
 ISHIBASHI Tatsuro / President, Kyushu University
 KODAMA Hiroaki / President, Saga University
 SANO Akira / President, Kagoshima University

•Auditors

TANO Shun-ichi / President, The University of Electro-Communications
 UEDA Takanori / President, University of Fukui

Assistants to President

FUJII Teruo / President, The University of Tokyo
 NAKANO Satoshi / President, Hitotsubashi University
 HASEGAWA Mariko / President, SOKENDAI (The Graduate University for Advanced Studies)
 KAKEHI Yoshiyuki / President, Kagawa University
 NODA Atsunori / President, Aichi University of Education
 KIBE Nobuko / President, National Institutes for the Humanities

Objectives and Activities of JANU

● Objectives of JANU (Article 4 of the Articles of Incorporation)

JANU shall contribute to the promotion of national university corporations and the improvement of standards of higher education and academic research in our nation with well-balanced development, creating the circumstances to ensure outstanding achievements conducted by national university corporations on various activities related to education, research and contribution to the society.

● Activities of JANU (Article 5 of the Articles of Incorporation)

- (1) Activities necessary for national universities to promote high-quality education, academic research, and social contribution
- (2) Studies and research necessary for universities' voluntary policy-making activities as well as for proposals concerning the national government's policies on higher education, academic research, etc.
- (3) International exchange programs based on international partnership
- (4) Support for the management and administration of national university corporations
- (5) Other activities necessary for achieving the objectives of JANU

Major Activities in FY2021

◎General Assembly meetings and Board of Directors meetings

- General Assembly meetings (Jun., Nov., Jan., Mar.)
- Board of Directors meetings (Apr., May, Jul., Oct., Dec., Feb.)



The second Board of Directors meeting

◎Request and proposal activities

- "Request Relating to Grants-in-Aid for Scientific Research in Response to the Spread of COVID-19" (with the Japan Association of Public Universities and Federation of Japanese Private Colleges and Universities Associations) (Apr.)
- "Regarding the Ideal State of National University Corporations Toward the 4th Medium-Term Objective Period — 18 Recommendations to Contribute to the Realization of a Resilient and Inclusive Society" (Jun.)
- "Request for Relaxation of New Entry to Japan for Privately Financed International Students Affected by COVID-19"(Sept.)
- Requests Regarding the Enhancement of a National-University-Related Budget in the Supplementary Budget for FY2021 (Oct., Nov.)
- Requests Regarding Securing a Sufficient National-University-Related Budget and Tax Revisions for FY2022 (Sep., Oct., Nov., Dec.)
- "National University Admissions Selection System from FY2024—Basic Policy of the Japan Association of National Universities—" and "President's Comment on the Formulation of the Policy" (Jan.)



Written request submitted to Mr. SUEMATSU Shinsuke, MEXT Minister

◎International activities

- The Japan-UK Higher Education Dialogue 2021 (Jul.)
- 2021 Trilateral university leaders' meeting – France – Germany – Japan (Oct.)
- 2021 Taiwan-Japan University Presidents' Virtual Forum (Nov.)
- Online lecture on the UK's research evaluation system REF and social impact evaluation, "Demonstrating Research Impact: Insights from the UK's Research Excellence Framework."



The Japan-UK Higher Education Dialogue 2021

◎Seminars and training sessions

- Liaison Meeting for Board Members of National Universities (Jun., Sep.)
- Workshop for National University General Insurance (Jul.)
- "Top Seminar" (Aug.)
- University-Design-Workshop (Sep.)
- University Reform Symposium (Nov.)
- University Management Seminar (Nov.)
- Study Session for Young Staff of National Universities (Dec.)
- Seminar for Newly Appointed Presidents (Feb.)



Publication of the National Universities magazine and other reports

◎Publication and public relations

- Public relations magazine "National Universities" published (Jul., Sep., Dec., Mar.)
- Extra issue of the public relations magazine "National Universities" published (Jul.)
- Discussion meeting with editorial writers (Oct.)