

# Members of the JANU

●Regular Members (82 national university corporations,  
86 national universities)

●Special Members (4 organizations)

National Institutes for the Humanities,  
National Institutes of Natural Sciences,  
High Energy Accelerator Research Organization,  
Research Organization of Information and Systems

## Nation of Knowledge

### Tokyo Branch

(12 national university corporations,  
12 universities)

The University of Tokyo,  
Tokyo Medical and Dental University,  
Tokyo University of Foreign Studies,  
Tokyo Gakugei University,  
Tokyo University of Agriculture and Technology,  
Tokyo University of the Arts,  
Tokyo Institute of Technology,  
Tokyo University of Marine Science and Technology,  
Ochanomizu University,  
The University of Electro-Communications,  
Hitotsubashi University,  
National Graduate Institute for Policy Studies

### Kanto-Koshin'etsu Branch

(14 national university corporations,  
14 universities)

Ibaraki University, University of Tsukuba,  
Tsukuba University of Technology, Utsunomiya University,  
Gunma University, Saitama University, Chiba University,  
Yokohama National University,  
The Graduate University for Advanced Studies, SOKENDAI,  
Niigata University, Nagaoka University of Technology,  
Joetsu University of Education,  
University of Yamanashi, Shinshu University

### Tokai-Hokuriku Branch

(11 national university corporations, 12 universities)

University of Toyama, Kanazawa University,  
Japan Advanced Institute of Science and Technology,  
University of Fukui,  
Shizuoka University,  
Hamamatsu University School of Medicine,  
Tokai National Higher Education and Research System, Gifu University,  
Tokai National Higher Education and Research System, Nagoya University,  
Aichi University of Education,  
Nagoya Institute of Technology,  
Toyoashi University of Technology,  
Mie University

### Chugoku-Shikoku Branch

(10 national university corporations,  
10 universities)

Tottori University, Shimane University,  
Okayama University, Hiroshima University, Yamaguchi University,  
Tokushima University, Naruto University of Education,  
Kagawa University, Ehime University,  
Kochi University

### Kyushu Branch

(11 national university corporations,  
11 universities)

University of Teacher Education Fukuoka, Kyushu University,  
Kyushu Institute of Technology,  
Saga University, Nagasaki University,  
Kumamoto University, Oita University,  
University of Miyazaki, Kagoshima University,  
National Institute of Fitness and Sports in Kanoya,  
University of the Ryukyus

### Hokkaido Branch

(5 national university corporations,  
7 universities)

Hokkaido University,  
Hokkaido University of Education,  
Muroran Institute of Technology,  
Hokkaido Higher Education and Research System,  
Otaru University of Commerce,  
Hokkaido Higher Education and Research System,  
Obihiro University of Agriculture and Veterinary Medicine,  
Hokkaido Higher Education and Research System,  
Kitami Institute of Technology  
Asahikawa Medical University

### Tohoku Branch

(7 national university corporations,  
7 universities)

Hirosaki University,  
Iwate University,  
Tohoku University,  
Miyagi University of Education,  
Akita University,  
Yamagata University,  
Fukushima University

### Kinki Branch

(12 national university corporations,  
13 universities)

Shiga University,  
Shiga University of Medical Science,  
Kyoto University,  
Kyoto University of Education,  
Kyoto Institute of Technology,  
Osaka University,  
Osaka Kyoiku University,  
Hyogo University of Teacher Education,  
Kobe University,  
Nara National Institute of Higher Education and Research,  
Nara University of Education,  
Nara National Institute of Higher Education and Research,  
Nara Women's University,  
Nara Institute of Science and Technology,  
Wakayama University

# Access



## Directions

### By subway

3-minutes walk from Jimbocho Station, Exit A8  
Take Hanzomon Line (Tokyo Metro), Mita Line (Toei),  
or Shinjuku Line (Toei)  
4-minutes walk from Takebashi Station, Exit 1B  
Take Tozai Line (Tokyo Metro)

### By car

Take Metropolitan Expressway and get off at Daikancho  
Exit, Kandabashi Exit or Hitotsubashi Exit.



The Japan Association of  
National Universities

<https://www.janu.jp/>

National Center of Sciences Bldg. 4F  
2-1-2 Hitotsubashi, Chiyoda-ku, Tokyo 101-0003, Japan  
Tel:+81-3-4212-3506 Fax:+81-3-4212-3509 E-mail:info@janu.jp

The Japan Association of  
National Universities

2023



The Japan Association of  
National Universities

## Message from the President



JANU President  
NAGATA Kyosuke (University of Tsukuba)

The Japan Association of National Universities (JANU) comprises 86 national universities governed by 82 national university corporations, each with its own unique characteristics (regular members), and four Inter-University Research Institute Corporations (special members), which are operated in close collaboration with the research community, in particular universities. Since its establishment, the member universities have played active roles in providing education and promoting research at the world's highest level, succeeding to and developing important academic disciplines, ensuring equal opportunities for higher education across the nation, and developing global human resources. The approximately 60,000 faculty members are responsible for the education of approximately 580,000 undergraduate and graduate students while conducting a wide variety of research. The diverse academic knowledge possessed by national universities, as a whole, helps solve global issues. At the same time, it will become a powerful means to realize a highly resilient, sustainable and inclusive society. National universities located in all prefectures play a central role in their respective regions through the creation of innovation and the development of excellent human resources.

In the meantime, the government has established a 10 trillion yen-university fund system and launched a "Package for Comprehensive Promotion of Research Universities with a Regional Core and Distinctive Characteristics" in order to raise the level of Japan's research capabilities. In its request submitted to the Ministry of Education, Culture, Sports, Science and Technology in October 2022, the JANU requested that these two systems should be established as an integrated system that fully reflects the intention of improving and developing Japan's overall research capabilities and international competitiveness. We believe that both systems will dramatically enhance Japan's research capabilities and international competitiveness.

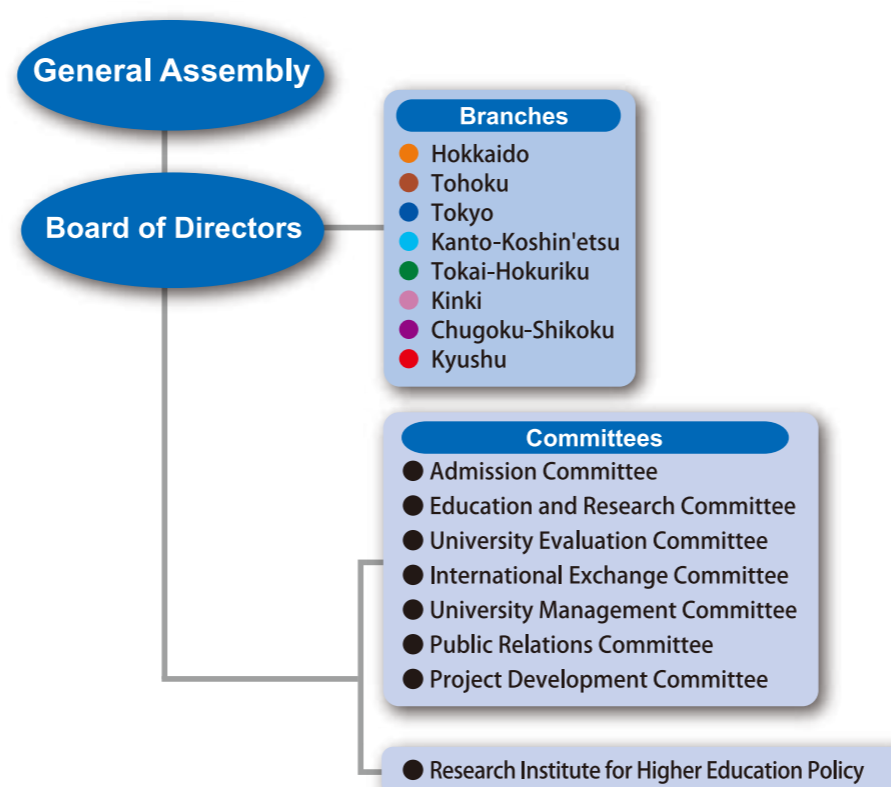
In recent years, the social situation has become increasingly uncertain and difficult due to such factors as the unstable international situation and soaring prices with no end in sight, and national universities have been in a tough management situation. However, even under such difficult circumstances, national universities should function as a driving force for the future and for the growth of our country, with pride in being the core of Japan, producing human resources who will support the nation.

Recognizing the need to improve international competitiveness and develop global human resources, as stated in the second proposal of the Council for the Creation of Future Education, toward the fifth Medium-Term Objectives Period beginning in FY2028, we will promote the reform of national universities in order to develop highly skilled global human resources who are diverse in terms of age, gender, nationality, region, etc. even as the population composition changes due to the declining birth rate. We are determined to propose a bold future vision of national universities.

The JANU will strive to improve the quality of Japanese higher education and produce more promising human resources by providing various educational opportunities, including recurrent and reskilling programs, while holding discussions with all parties concerned. Aiming to ensure that national universities meet the expectations of all stakeholders, we will endeavor to proactively disseminate information and implement autonomous initiatives.

To this end, we sincerely ask for your continued support.

## Organization Chart



## Governance

(As of June 12, 2023)

### Board Members

#### •Members of the Board

NAGATA Kyosuke / President / President, University of Tsukuba  
OHNO Hideo / Vice President / President, Tohoku University  
HOUKIN Kiyohiro / Vice President / President, Hokkaido University  
FUJISAWA Masato / Vice President / President, Kobe University  
SASAKI Yasuko / Vice President / President, Ochanomizu University  
IDA Ryuichi / Senior Managing Director / Former President, Shiga University  
MURATA Yoshinori / Managing Director / Director-General, JANU

NISHIKAWA Yuji / President, Asahikawa Medical University  
MURAMATSU Takashi / President, Miyagi University of Education  
TANAKA Yujiro / President, Tokyo Medical and Dental University  
HAYASHI Kayoko / President, Tokyo University of Foreign Studies  
MASU Kazuya / President, Tokyo Institute of Technology  
UMEHARA Izuru / President, Yokohama National University  
USHIKI Tatsuo / President, Niigata University  
WADA Takashi / President, Kanazawa University  
UEDA Takanori / President, University of Fukui  
MATSUO Seiichi / President, Tokai National Higher Education and Research System  
MINATO Nagahiro / President, Kyoto University  
NISHIO Shojiro / President, Osaka University  
NAKAJIMA Hiromitsu / President, Tottori University  
KAWAMURA Yasuhiko / President, Tokushima University  
NISHINA Hiroshige / President, Ehime University  
ISHIBASHI Tatsuro / President, Kyushu University  
KODAMA Hiroaki / President, Saga University  
OGAWA Hisao / President, Kumamoto University

#### •Auditors

TANO Shun-ichi / President, The University of Electro-Communications  
TERASHIMA Kazuhiko / President, Toyohashi University of Technology

### Assistants to President

FUJII Teruo / President, The University of Tokyo  
NAKANO Satoshi / President, Hitotsubashi University  
OKAMOTO Ikuko / President, Osaka Kyoiku University  
SHIOZAKI Kazuhiro / President, Nara Institute of Science and Technology  
OCHI Mitsuo / President, Hiroshima University  
YAMAUCHI Masanori / Director General, High Energy Accelerator Research Organization (KEK)

## Objectives and Activities of JANU

- **Objectives of JANU (Article 4 of the Articles of Incorporation)**  
JANU shall contribute to the promotion of national university corporations and the improvement of standards of higher education and academic research in our nation with well-balanced development, creating the circumstances to ensure outstanding achievements conducted by national university corporations on various activities related to education, research and contribution to the society.
- **Activities of JANU (Article 5 of the Articles of Incorporation)**
  - (1) Activities necessary for national universities to promote high-quality education, academic research, and social contribution
  - (2) Studies and research necessary for universities' voluntary policy-making activities as well as for proposals concerning the national government's policies on higher education, academic research, etc.
  - (3) International exchange programs based on international partnership
  - (4) Support for the management and administration of national university corporations
  - (5) Other activities necessary for achieving the objectives of JANU

## Major Activities in FY2022

### ◎General Assembly meetings and Board of Directors meetings

- General Assembly meetings (Jun., Nov., Jan., Mar.)
- Board of Directors meetings (Apr., May, Jul., Oct., Dec., Feb.)



The second Board of Directors meeting

### ◎Request and proposal activities

- Publicized "Regarding the Initiatives to Enhance Strengths and Characteristics of Regional Core and Distinctive Research Universities (Final Summary)—Seven Recommendations to Strengthen the Research Capabilities and International Competitiveness of Japanese Universities—" (Oct.)
- Submitted "Requests Regarding Securing a Sufficient National University-related Budget and Tax Revisions for FY2023" (Sep., Oct.)
- Submitted the request "Strengthening Functions of Universities and Technical Colleges Leading the Growth Fields such as Digital and Green Technologies—Toward Continuous Support through the Fund for Strengthening Functions of Universities and Technical Colleges Leading the Growth Fields—" (Dec.)
- Publicized "Rebuilding the Intellectual Infrastructure to Enhance Universities' Research Capabilities and International Competitiveness—Guaranteeing the Circulation of Journals and Other Academic Information—" (Feb.)
- Publicized "Guidelines for Autonomous Management of Chemical Substances at Universities" (Mar.)



Written request submitted to Ms. NAGAOKA Keiko, MEXT Minister

### ◎International activities

- Attended the meeting of the Japan-France Joint Committee on Cooperation in Science and Technology, and held a signing ceremony for the "Agreement Concerning Mutual Recognition of Enrollment, Degrees and Credits" between JACUIE, France Universités, and CDEFI (Jul.)
- Attended the IAU 16th General Conference (Dublin, Ireland) (Oct.)
- Issued the JANU Statement on Research Integrity (Nov.)
- Held the UK-Japan Higher Education Forum as part of the UK-Japan exchange project (Dec.)
- Attended the 24th Japan-Germany Joint Committee Meeting on Science and Technology Cooperation (Feb.)



The signing of an agreement between JACUIE, France Universités, and CDEFI

### ◎Seminars and training sessions

- Liaison Meeting for Board Members of National Universities [Research activities and security of national universities] (Jun.)
- "Top Seminar" (Aug.)
- University-Design-Workshop (Sep.)
- Liaison Meeting for Board Members of National Universities [PR strategy] (Oct.)
- University Reform Symposium [Universities' efforts to achieve carbon neutrality] (Nov.)
- University Management Seminar [Recurrent education in the future] (Nov.)
- Study Session for Young Staff of National Universities (Dec.)
- Seminar for Newly Appointed Presidents (Feb.)



Publication of the National Universities magazine and other reports

### ◎Publication and public relations

- Public relations magazine "National Universities" published (Jun., Sep., Dec., Mar.)
- Extra issue of the public relations magazine "National Universities" published (Jun.)
- Discussion meeting with editorial writers (Oct.)