

Members of the JANU

●Regular Members (81 national university corporations, 85 national universities)

●Special Members (4 organizations)

National Institutes for the Humanities,
National Institutes of Natural Sciences,
High Energy Accelerator Research Organization,
Research Organization of Information and Systems

Nation of Knowledge

Tokyo Branch

(11 national university corporations, 11 universities)

The University of Tokyo,
Tokyo University of Foreign Studies,
Institute of Science Tokyo,
Tokyo Gakugei University,
Tokyo University of Agriculture and Technology,
Tokyo University of the Arts,
Tokyo University of Marine Science and Technology,
Ochanomizu University,
The University of Electro-Communications,
Hitotsubashi University,
National Graduate Institute for Policy Studies

Kanto-Koshin'etsu Branch

(14 national university corporations, 14 universities)

Ibaraki University, University of Tsukuba,
Tsukuba University of Technology, Utsunomiya University,
Gunma University, Saitama University, Chiba University,
Yokohama National University,
The Graduate University for Advanced Studies, SOKENDAI,
Niigata University, Nagaoka University of Technology,
Joetsu University of Education,
University of Yamanashi, Shinshu University

Tokai-Hokuriku Branch

(11 national university corporations, 12 universities)

University of Toyama, Kanazawa University,
Japan Advanced Institute of Science and Technology,
University of Fukui,
Shizuoka University,
Hamamatsu University School of Medicine,
Tokai National Higher Education and Research System, Gifu University,
Tokai National Higher Education and Research System, Nagoya University,
Aichi University of Education,
Nagoya Institute of Technology,
Toyohashi University of Technology,
Mie University

Chugoku-Shikoku Branch

(10 national university corporations, 10 universities)

Tottori University, Shimane University,
Okayama University, Hiroshima University, Yamaguchi University,
Tokushima University, Naruto University of Education,
Kagawa University, Ehime University,
Kochi University

Kyushu Branch

(11 national university corporations, 11 universities)

University of Teacher Education Fukuoka, Kyushu University,
Kyushu Institute of Technology,
Saga University, Nagasaki University,
Kumamoto University, Oita University,
University of Miyazaki, Kagoshima University,
National Institute of Fitness and Sports in Kanoya,
University of the Ryukyus

Hokkaido Branch

(5 national university corporations, 7 universities)

Hokkaido University,
Hokkaido University of Education,
Muroran Institute of Technology,
Hokkaido Higher Education and Research System, Otaru University of Commerce,
Hokkaido Higher Education and Research System, Obihiro University of Agriculture and Veterinary Medicine,
Hokkaido Higher Education and Research System, Kitami Institute of Technology
Asahikawa Medical University

Tohoku Branch

(7 national university corporations, 7 universities)

Hirosaki University,
Iwate University,
Tohoku University,
Miyagi University of Education,
Akita University,
Yamagata University,
Fukushima University

Kinki Branch

(12 national university corporations, 13 universities)

Shiga University,
Shiga University of Medical Science,
Kyoto University,
Kyoto University of Education,
Kyoto Institute of Technology,
Osaka University,
Osaka Kyoiku University,
Hyogo University of Teacher Education,
Kobe University,
Nara National Institute of Higher Education and Research, Nara University of Education,
Nara National Institute of Higher Education and Research, Nara Women's University,
Nara Institute of Science and Technology,
Wakayama University

Access



Directions

By subway

3-minutes walk from Jimbocho Station, Exit A8
Take Hanzomon Line (Tokyo Metro), Mita Line (Toei),
or Shinjuku Line (Toei)
4-minutes walk from Takebashi Station, Exit 1B
Take Tozai Line (Tokyo Metro)

By car

Take Metropolitan Expressway and get off at Daikancho Exit, Kandabashi Exit or Hitotsubashi Exit.



The Japan Association of
National Universities

<https://www.janu.jp/>

National Center of Sciences Bldg. 4F
2-1-2 Hitotsubashi, Chiyoda-ku, Tokyo 101-0003, Japan
Tel: +81-3-4212-3506 Fax: +81-3-4212-3509 E-mail: info@janu.jp

The Japan Association of
National Universities

2024



The Japan Association of
National Universities

Message from the President



JANU President
NAGATA Kyosuke (University of Tsukuba)

In Japan, national universities have played an active role in providing education and promoting research at the world's highest level, inheriting and developing important academic disciplines, ensuring equal opportunities for higher education across the nation, and developing globally effective human resources.

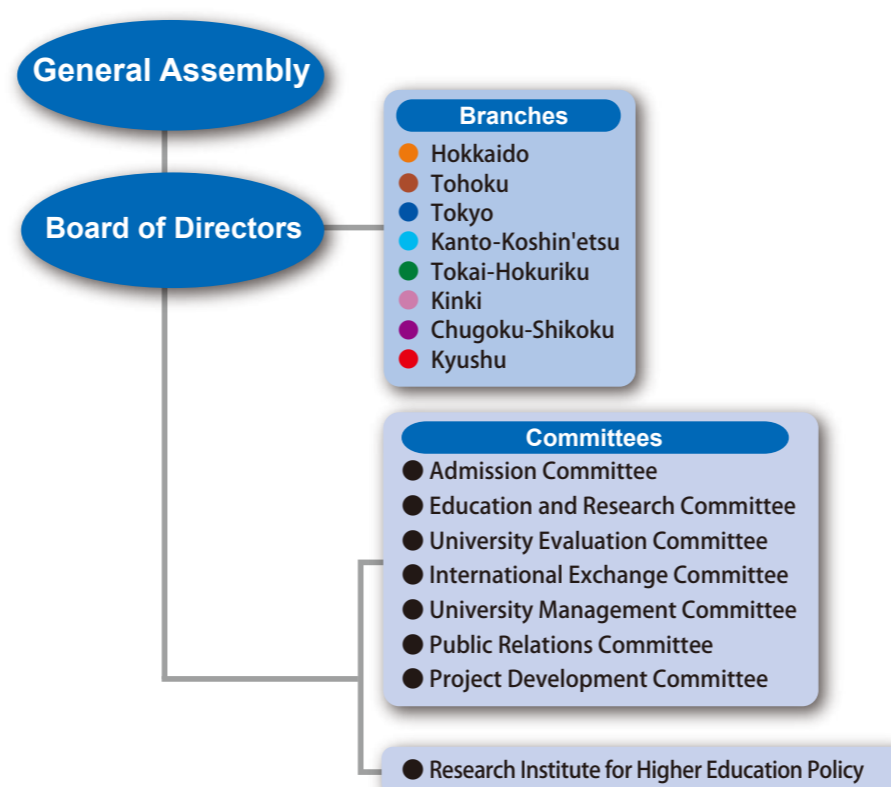
Today, Japan and the world are facing increasing global geopolitical risks, and large-scale disasters are occurring more frequently. In this situation, as countries search for fundamental solutions to various global issues, Japan has few opportunities to take the lead in such initiatives, and is rapidly losing its presence in the world. Domestically, there are many issues that will greatly impact the future of our country, such as stagnant economic growth, a declining birthrate and aging population that are progressing faster than expected, ensuring the sustainability of social security, eliminating regional gaps, and transitioning to sustainable energy.

Under such circumstances, Japanese national universities need to be the very source of Japan's research prowess, serve as hubs for supporting the regions, and become more appealing to people around the world, thereby providing places for them to connect and interact with the world. Currently, each Japanese prefecture has at least one national university so that people in any region can access high-level education. National universities share the common philosophy of nurturing people who have a passionate aspiration for learning. They are aware of their role as the bases that support the culture, society, and economy of each region as well as their responsibilities in the fields of industry, medical care, welfare, education, etc. We at the Japan Association of National Universities (JANU) aim to establish a novel concept, "national university system" in the future, where functions and responsibilities common to national universities are systematized. Recognizing that national universities are common social capital, we should make the most of our advantages, collaborate in ways that only national universities can, and effectively use the national university system to ensure that national universities as a whole serve the Japanese nation and broaden their appeal to the world.

This year marks the 20th anniversary of the shift of Japanese national universities to corporation status in 2004. Looking back over the past 20 years, we must consider what universities mean to our country and what contribution national universities can make to our rapidly changing society. In response to new changes in social conditions, it is time to reconsider the future of national universities based on the principle of immutability and fluidity and to determine what should and should not be changed. We will pursue dreams of a brighter future for the world and Japan 20 years from now, and specifically consider what national universities must do. We will not only play a role *in* society but also play a role as a *supporter* of society.

JANU supports national universities that contribute to the development of the various regions and societies, circulate knowledge and impart it to society, and play a leading role in creating new value and new social infrastructure. We sincerely ask for your continued support.

Organization Chart



Governance

(As of November 8, 2024)

Board Members

•Members of the Board

NAGATA Kyosuke / President / President, University of Tsukuba
 HOUKIN Kiyohiro / Vice President / President, Hokkaido University
 FUJISAWA Masato / Vice President / President, Kobe University
 MINATO Nagahiro / Vice President / President, Kyoto University
 SASAKI Yasuko / Vice President / President, Ochanomizu University
 IDA Ryuichi / Senior Managing Director / Former President, Shiga University
 MURATA Yoshinori / Managing Director / Director-General, JANU
 NISHIKAWA Yuji / President, Asahikawa Medical University
 TOMINAGA Teiji / President, Tohoku University
 MATSUOKA Naotoshi / President, Miyagi University of Education
 FUJII Teruo / President, The University of Tokyo
 HAYASHI Kayoko / President, Tokyo University of Foreign Studies
 OHTAKE Naoto / President and Chief Executive Officer (CEO), Institute of Science Tokyo
 UMEHARA Izuru / President, Yokohama National University
 USHIKI Tatsuo / President, Niigata University
 WADA Takashi / President, Kanazawa University
 UEDA Takanori / President, University of Fukui
 MATSUO Seiichi / President, Tokai National Higher Education and Research System
 NISHIO Shojiro / President, Osaka University
 NAKAJIMA Hiromitsu / President, Tottori University
 KAWAMURA Yasuhiko / President, Tokushima University
 NISHINA Hiroshige / President, Ehime University
 ISHIBASHI Tatsuro / President, Kyushu University
 KODAMA Hiroaki / President, Saga University
 OGAWA Hisao / President, Kumamoto University

•Auditors

TANO Shun-ichi / President, The University of Electro-Communications
 ITO Masaaki / President, Mie University

Assistants to President

NAKANO Satoshi / President, Hitotsubashi University
 OKAMOTO Ikuko / President, Osaka Kyoiku University
 SHIOZAKI Kazuhiro / President, Nara Institute of Science and Technology
 OCHI Mitsuo / President, Hiroshima University
 ASAI Shoji / Director General, High Energy Accelerator Research Organization (KEK)

Objectives and Activities of JANU

- **Objectives of JANU (Article 4 of the Articles of Incorporation)**
 JANU shall contribute to the promotion of national university corporations and the improvement of standards of higher education and academic research in our nation with well-balanced development, creating the circumstances to ensure outstanding achievements conducted by national university corporations on various activities related to education, research and contribution to the society.
- **Activities of JANU (Article 5 of the Articles of Incorporation)**
 - (1) Activities necessary for national universities to promote high-quality education, academic research, and social contribution
 - (2) Studies and research necessary for universities' voluntary policy-making activities as well as for proposals concerning the national government's policies on higher education, academic research, etc.
 - (3) International exchange programs based on international partnership
 - (4) Support for the management and administration of national university corporations
 - (5) Other activities necessary for achieving the objectives of JANU

Major Activities in FY2023

◎General Assembly meetings and Board of Directors meetings

- General Assembly meetings (Jun., Nov., Jan., Mar.)
- Board of Directors meetings (Apr., May, Jul., Oct., Dec., Feb.)



The second Board of Directors meeting

◎Request and proposal activities

- Submitted JANU's urgent requests (May, Jun.)
- Offered the JANU President's comment regarding the utilization of generative AI (May)
- Submitted requests regarding the Top Global University Project and the Inter-university Exchange Project (May)
- Submitted requests for measures necessary to promote internationalization of national universities (Aug.)
- Submitted "Requests Regarding Securing a Sufficient National University-related Budget and Tax Revisions for FY2024" (Aug., Nov.)
- Issued the JANU President's statement about the prevention of sexual violence, including sexual harassment, at national universities (Oct.)
- Issued the JANU President's statement about the bill for partially amending the National University Corporation Act (Nov.)
- Published the Guidelines for Autonomous Management of Chemical Substances at Universities (second edition) (Jan.)

◎International Activities

- Attended the G7 Security and Integrity of the Global Research Ecosystem Working Group (G7 SIGRE WG) at the G7 Science Sherpa (Apr., Sep., Nov.)
- Held the Taiwan (FICHET)-Japan (JACUIE) University Presidents' Forum (Puli, Taiwan) in Japan-Taiwan Exchange Project 2023 (Jul.)
- Attended the IAU International Conference in Doha, Qatar (Nov.)



Written request submitted to Ms. NAGAOKA Keiko, then MEXT Minister

◎Seminars and training sessions

- Liaison Meeting for Board Members of National Universities [Diversity, Equity & Inclusion: Toward the Career Development and Promotion of Female Researchers] (Jun.)
- National University Corporation Department Managers' Training (Jul.)
- "Top Seminar" (Aug.)
- University-Design-Workshop (Sep.)
- Liaison Meeting for Board Members of National Universities [International Exchange in Anticipation of a Post-COVID Global Society] (Oct.)
- Seminar on Risk Management during the Selection of Students to be Admitted (Oct.)
- University Reform Symposium [Possibilities of Interdisciplinary Education] (Oct.)
- Study Session for Public Relations Personnel at National University Corporations [Effective Use of Social Media in University Public Relations] (Nov.)
- Study Session for Young Staff of National Universities [Consider How to be Attractive University and What We Can Do] (Nov.)
- University Management Seminar [Various Forms of Inter-university Collaboration] (Dec.)
- Seminar for Newly Appointed Presidents (Feb.)



2023 Taiwan-Japan University Presidents' Forum



Publication of the National Universities magazine and other reports

◎Publication and public relations

- Public relations magazine "National Universities" No. 68 to No. 71 published (Jul., Oct., Dec., Mar.)
- Extra issue of the public relations magazine "National Universities" No. 21 published (Jul.)
- Discussion meeting with editorial writers (Oct.)